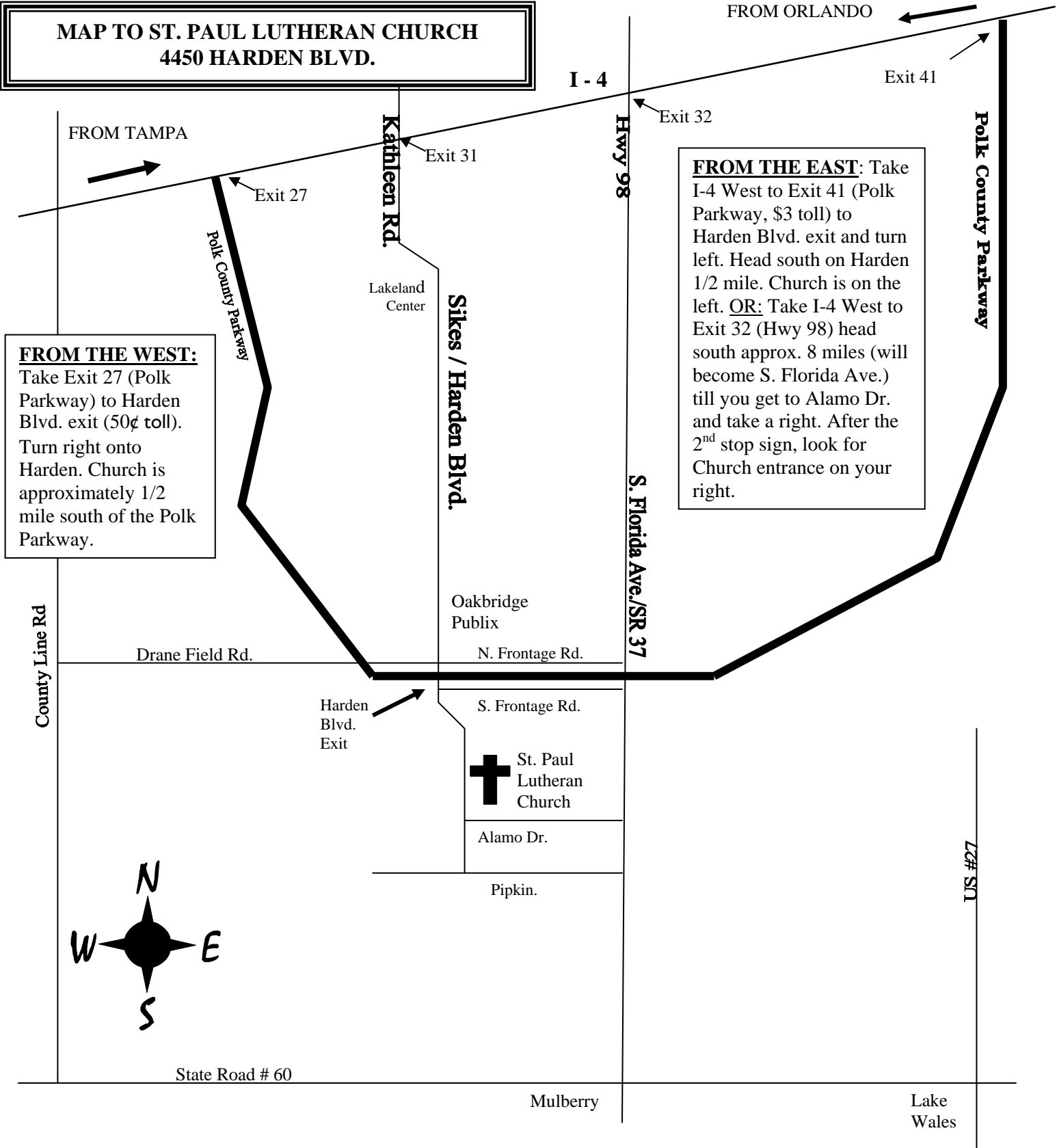


**MAP TO ST. PAUL LUTHERAN CHURCH  
4450 HARDEN BLVD.**



**FROM THE WEST:**  
Take Exit 27 (Polk Parkway) to Harden Blvd. exit (50¢ toll). Turn right onto Harden. Church is approximately 1/2 mile south of the Polk Parkway.

**FROM THE EAST:** Take I-4 West to Exit 41 (Polk Parkway, \$3 toll) to Harden Blvd. exit and turn left. Head south on Harden 1/2 mile. Church is on the left. **OR:** Take I-4 West to Exit 32 (Hwy 98) head south approx. 8 miles (will become S. Florida Ave.) till you get to Alamo Dr. and take a right. After the 2<sup>nd</sup> stop sign, look for Church entrance on your right.

**FROM THE SOUTH:** Take HWY 60 to Mulberry; turn north on SR37 (Florida Ave.). Go approximately 7 miles to Pipkin. Turn left; go 1 mile to Harden Blvd., turn right. Church is on the right 1/2 mile.